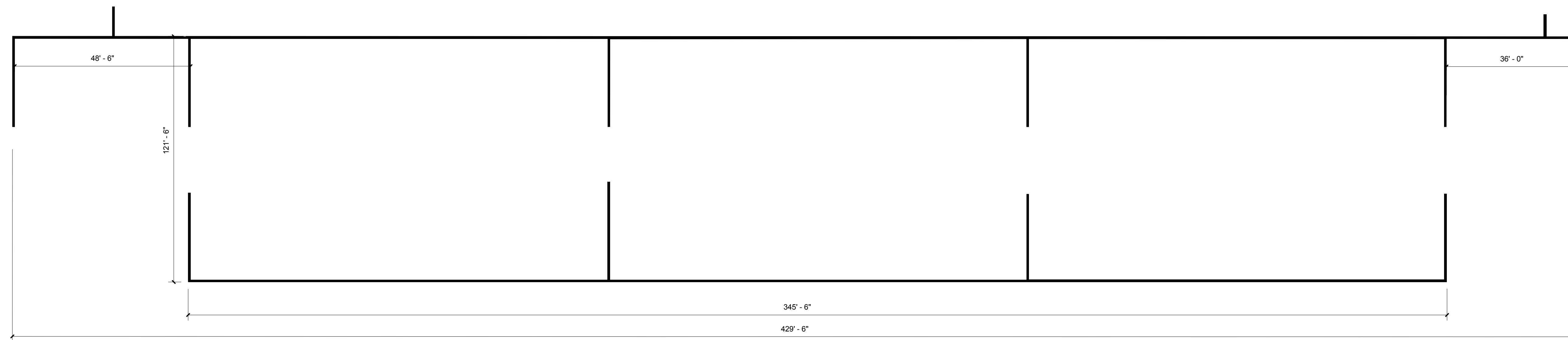
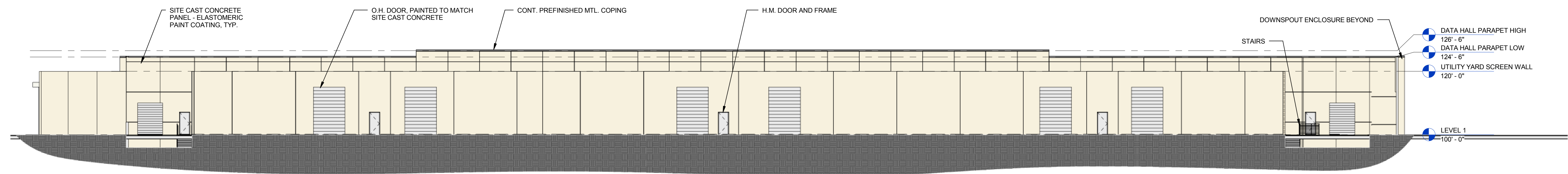
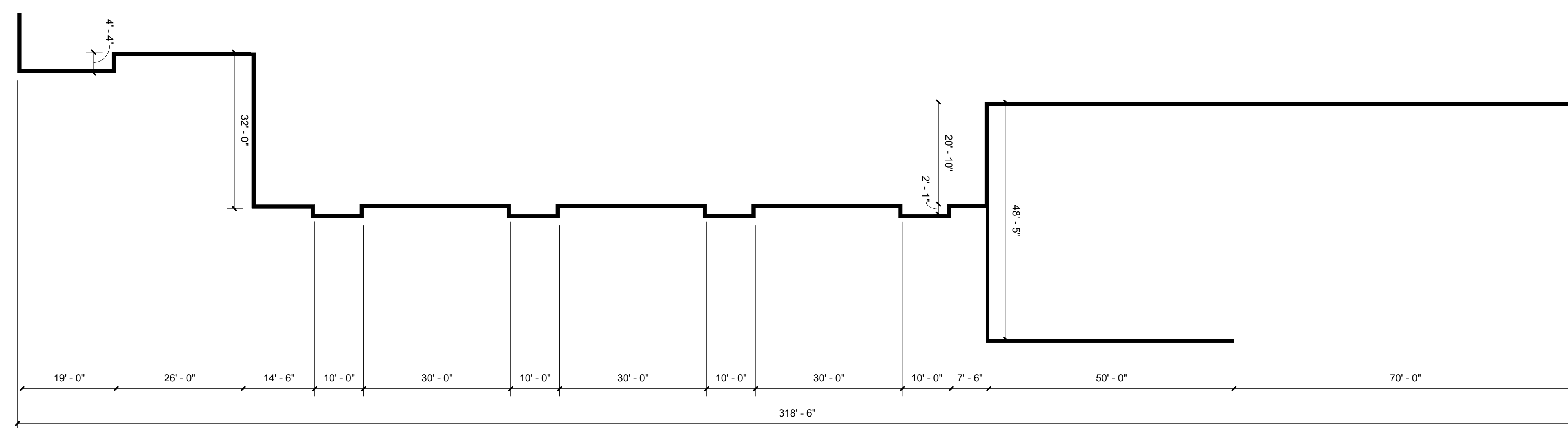
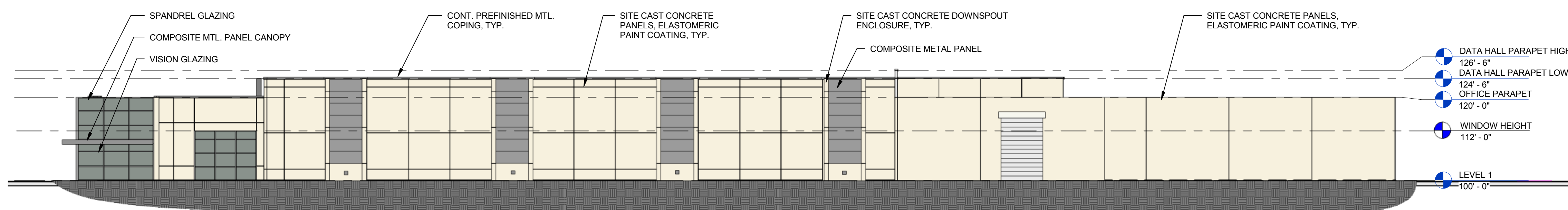


NORTH ELEVATION MATERIAL COMPOSITION:		
DOORS	1,165 SF	11%
CONCRETE:	9,765 SF	89%
TOTAL:	10,930 SF	



3 NORTH
1/16" = 1'-0"

EAST ELEVATION MATERIAL COMPOSITION:		
COMPOSITE METAL PANEL:	830 SF	12%
GLASS:	540 SF	8%
CONCRETE:	5,500 SF	80%
TOTAL:	6,870 SF	



4 EAST
1/16" = 1'-0"



EXTERIOR ELEVATIONS

STREAM DATA CENTER

EL02

Scale: 1/16" = 1'-0"